

CAT

CLIMATE ACTION TEAM



Weekly CAT session plans



Weekly powerpoints



Weekly worksheets

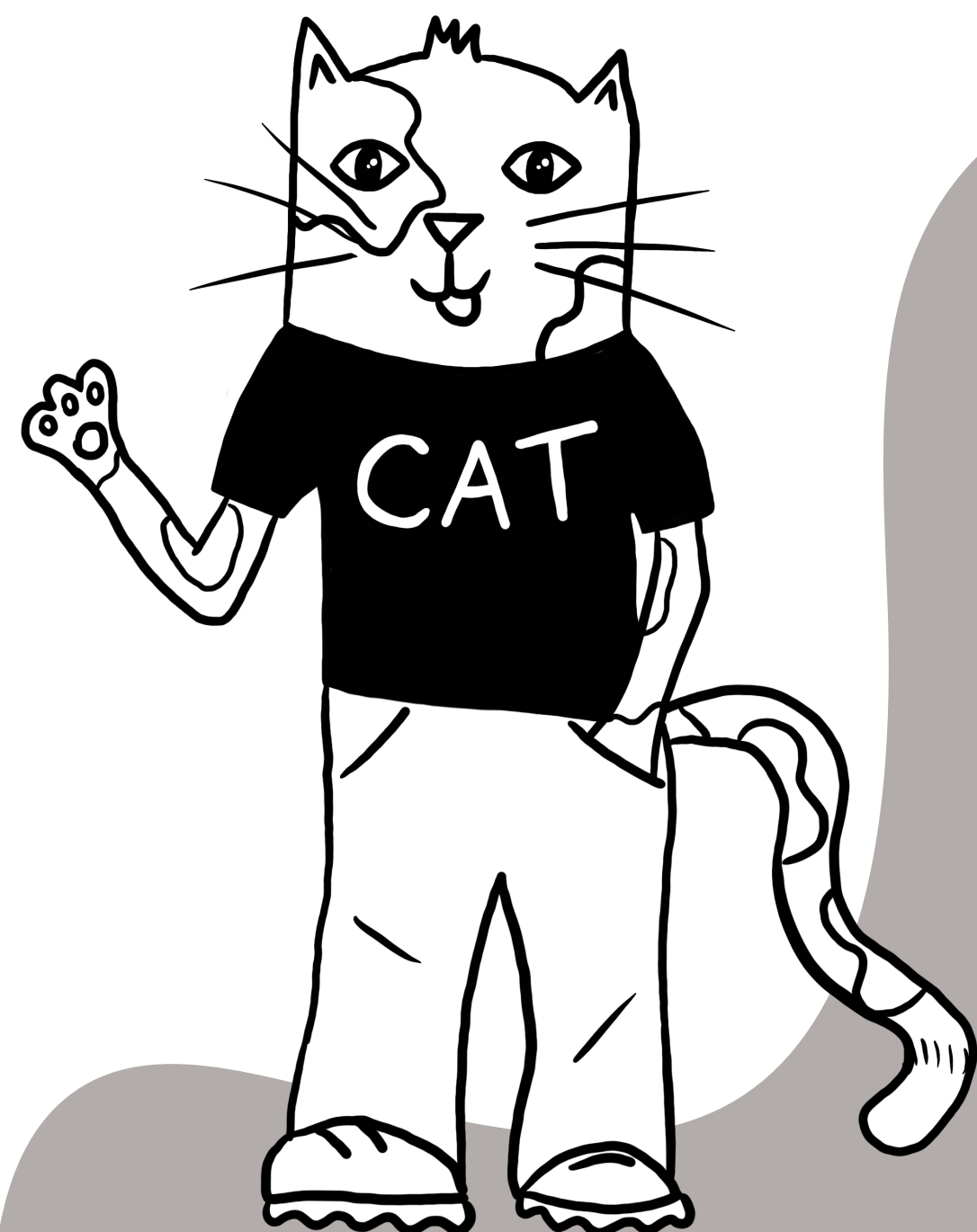


Take home sheets



Certificates

**ENABLING YOUNG
MINDS TO TAKE
ACTION AGAINST
THE CLIMATE CRISIS.**



CAT SESSION BREAKDOWN

THEME 1

Transport

THEME 2

Paper Usage & Printing

THEME 3

Water Usage & Waste

THEME 4

Energy – Types & Providers

THEME 5

Energy Usage – Lights

THEME 6

Energy Usage – Electrical

THEME 7

Food Waste

THEME 8

Plastic Waste

THEME 9

Me – What can I do myself?

THEME 10

Me – What can I do at home?

THEME 11

Our School Environment

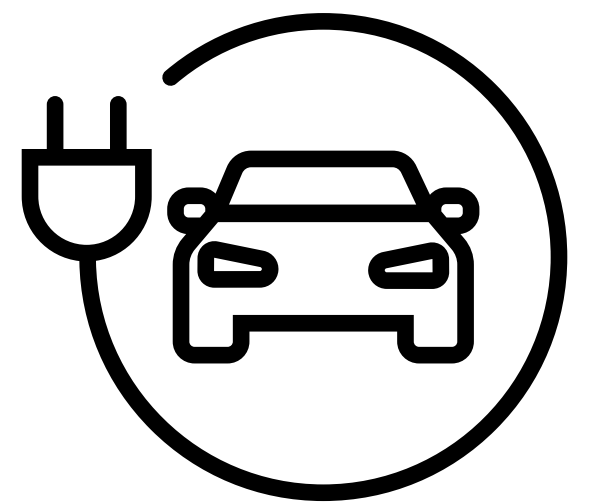
THEME OVERVIEWS

Here is an overview of each CAT theme. Don't forget to keep an eye out for links to events your school can take part in!

1 TRANSPORT

During this theme, you will investigate the use of transport across your school, look at the impact this has on the climate and explore the use of sustainable transport.

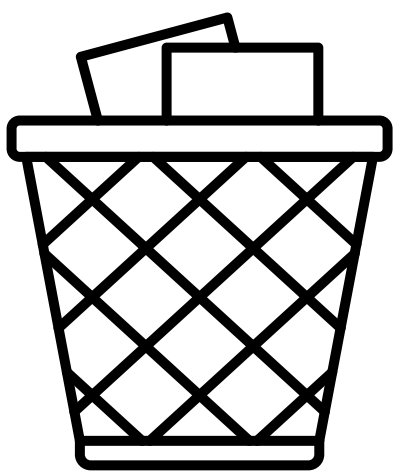
www.bikeability.org.uk/cycletoschoolweek



2

PAPER USAGE & PRINTING

During this theme, you will investigate the amount of paper you use across your school, look at the impact this has on the climate and explore ways to reduce this.



3

WATER USAGE & WASTE

During this theme, what you use water for in school, how much water is wasted and what you can do to reduce this and the impact on the climate.

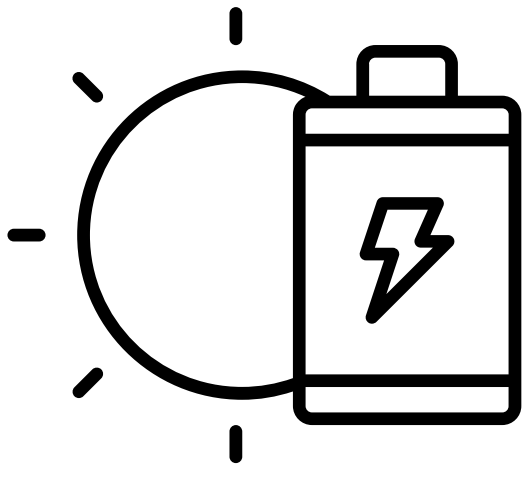
www.waterwise.org.uk/wsw



4

ENERGY - TYPES & PROVIDERS

During this theme, you will explore the meaning of energy, look in to where our energy comes from and investigate the different types of providers..

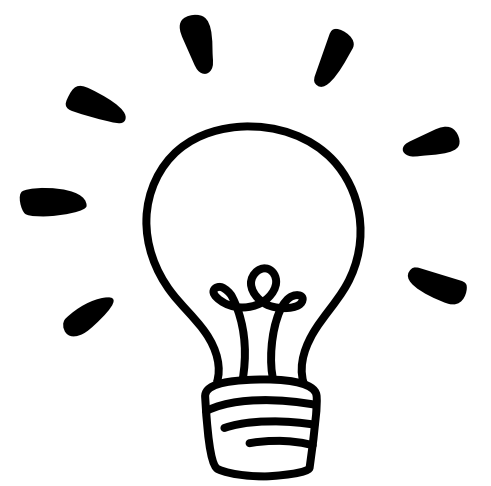


5

ENERGY USAGE - LIGHTS

During this theme, you will investigate the different types of lightbulbs and the impact they have on the climate as well as the energy being wasted through lights.

Switch off Fortnight - <https://jointhepod.org/campaigns>

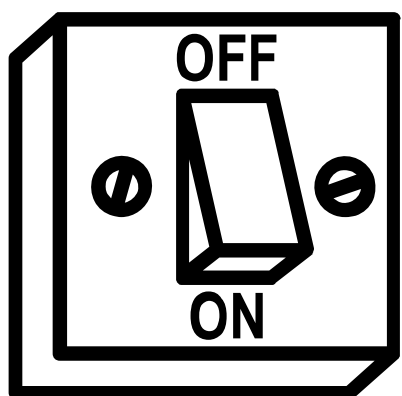


6

ENERGY USAGE - ELECTRICAL EQUIPMENT

During this theme, you will investigate the use of energy across your school from electrical equipment as well as the wasted energy from this equipment and what you can do to help.

Switch off Fortnight - <https://jointhepod.org/campaigns>



7

FOOD WASTE

During this theme, explore what food waste is and where it come from in your school. You will investigate how this waste impacts the climate and what you can do to help.



8



PLASTIC WASTE

During this theme, you will investigate your school's use of plastic, look at the impact this has on the climate and explore how you can help.

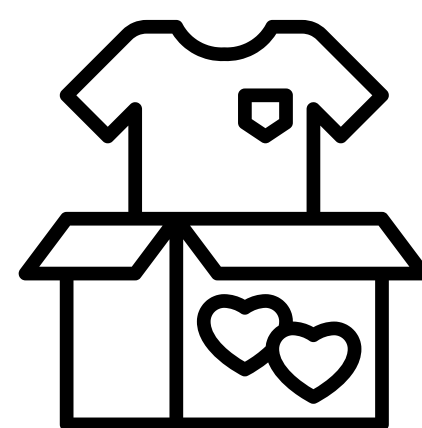
worldoceanday.org
thebigplasticcount.com/schools

9

ME - WHAT CAN I DO MYSELF?

During this theme, you look at yourself and the impact you have on the climate. You will learn about fast fashion and what you can do to help.

Recycle to Read Textiles - <https://jointhepod.org/campaigns>



10

ME - WHAT CAN I DO AT HOME?

During this theme, you will use everything you have learnt along the way about reduces your climate impact and take action in your own home.

Recycle to Read Toys- <https://jointhepod.org/campaigns>



11

OUR SCHOOL ENVIRONMENT

During this theme, you will explore your school's environment and learn about ways to help with the climate crisis while in your outdoor environment.

treecouncil.org.uk/seasonal-campaigns/national-tree-week

