

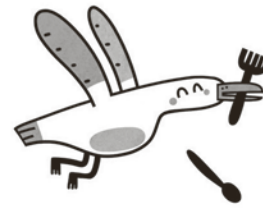
# Impact on WILDLIFE

It's easy for humans to ignore the negative effects of our plastic habits. No-one likes to drive past hundreds of plastic bottles lying on the side of the road, or see a plastic bag tangled in a tree like some kind of ugly bunting. But, apart from that, plastic is often thought of as being out of sight, out of mind. Unfortunately, this isn't the case for the wildlife we share the planet with!

Over 100,000 sea mammals are killed

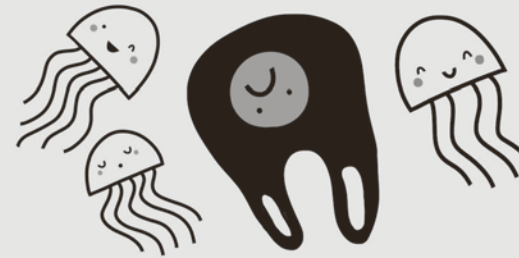
... along with one million sea birds. Even mussels, the shellfish whose pretty blue shells you often find on the beach, are eating plastic – a study done on mussels in the UK found tiny pieces of plastic in all of them. **Yum!**

But it's not just sea animals that are affected by plastic. Plastic that doesn't make its way into the oceans can be terrible for land wildlife. Plastic packaging can easily get stuck around the head or neck of an animal, or even tangled around their legs. Many animals like cows can also die from eating plastic bags and other items that blow into their fields.



**MORE THAN 90% OF SEABIRDS ARE ESTIMATED TO HAVE PLASTIC IN THEIR GUTS!**

by plastic in the oceans every year...



Plastic is impacting animals big and small. If we're not careful, our rubbish could have a terrible long-term effect on wildlife.

When we go swimming in the sea, we might have to get used to seeing plastic instead of fish – now that's not the nicest sight while snorkelling!

